



## TIMBER FRAME MODULAR HOUSE BODEN

The project is designed with a practical, thoughtful layout and a modern visual solution. The concept of the house is designed to achieve an energy efficiency rating of A, which will have a positive impact on low monthly utility costs.

The construction of the building will be based on extensive experience in building and exporting houses to Sweden, and every feedback from our customers serves as a testament to the quality guarantee.

**Helvijs Ervalds | CEO | +371 25666622**

**info@modern-house.lv | www.modern-house.lv**

**@housemodern\_2021** **@ModernHouseLV**

LEARN MORE





## PORTABLE TIMBER FRAME MODULAR HOUSE

Living area - 48,40 m<sup>2</sup>  
Building are - 60,00 m<sup>2</sup>

### WHY CHOOSE MODERN HOUSE?



TOP QUALITY



ENERGY EFFICIENCY



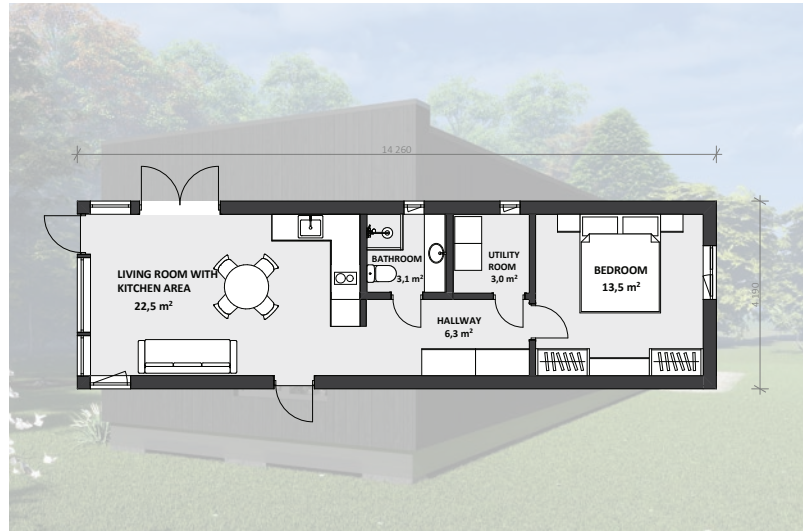
MODERN DESIGN



THOUGHTFUL PLANNING



CUSTOMIZED APPROACH  
AVAILABLE



## MODERN HOUSE OFFERS:

- ✓ DESIGN SERVICES  
(ARCHITECTURAL, HOME, CONSTRUCTION DESIGN)
- ✓ PRIVATE HOUSE CONSTRUCTION
- ✓ MODULAR HOUSE CONSTRUCTION
- ✓ CONSTRUCTION OF INDIVIDUAL PROJECTS
- ✓ 3D MODELING AND VISUALIZATION
- ✓ BUILDING PROJECT APPROVAL  
WITH LOCAL AUTHORITIES
- ✓ STRUCTURAL DESIGN PROJECTS FOR  
TIMBER FRAME BUILDINGS





## TIMBER FRAME MODULAR HOUSE FRÖLUNDA

The project is designed with a practical, thoughtful layout and a modern visual solution. The concept of the house is designed to achieve an energy efficiency rating of A, which will have a positive impact on low monthly utility costs.

The construction of the building will be based on extensive experience in building and exporting houses to Sweden, and every feedback from our customers serves as a testament to the quality guarantee.

**Helvijs Ervalds | CEO | +371 25666622**

**info@modern-house.lv | www.modern-house.lv**

**@housemodern\_2021** **@ModernHouseLV**

LEARN MORE





## PORTABLE TIMBER FRAME MODULAR HOUSE

Living area - 37,60 m<sup>2</sup>  
Building are - 46,90 m<sup>2</sup>

### WHY CHOOSE MODERN HOUSE?



TOP QUALITY



ENERGY EFFICIENCY



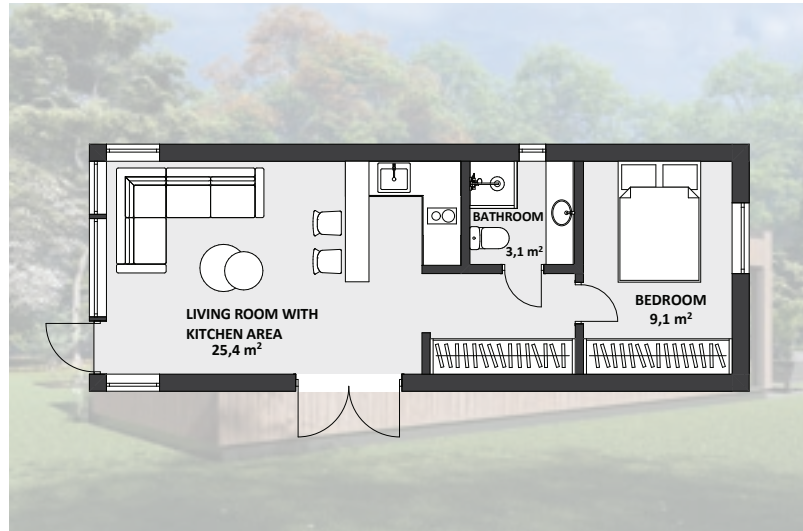
MODERN DESIGN



THOUGHTFUL PLANNING



CUSTOMIZED APPROACH  
AVAILABLE



## MODERN HOUSE OFFERS:

- ✓ DESIGN SERVICES  
(ARCHITECTURAL, HOME, CONSTRUCTION DESIGN)
- ✓ PRIVATE HOUSE CONSTRUCTION
- ✓ MODULAR HOUSE CONSTRUCTION
- ✓ CONSTRUCTION OF INDIVIDUAL PROJECTS
- ✓ 3D MODELING AND VISUALIZATION
- ✓ BUILDING PROJECT APPROVAL  
WITH LOCAL AUTHORITIES
- ✓ STRUCTURAL DESIGN PROJECTS FOR  
TIMBER FRAME BUILDINGS






## TIMBER FRAME MODULAR HOUSE IDRE

The project is designed with a practical, thoughtful layout and a modern visual solution. The concept of the house is designed to achieve an energy efficiency rating of A, which will have a positive impact on low monthly utility costs.

The construction of the building will be based on extensive experience in building and exporting houses to Sweden, and every feedback from our customers serves as a testament to the quality guarantee.

**Helvijs Ervalds | CEO | +371 25666622**

**info@modern-house.lv | www.modern-house.lv**

**@housemodern\_2021**  **@ModernHouseLV**

**LEARN MORE**





## PORTABLE TIMBER FRAME MODULAR HOUSE

Living area - 41,10 m<sup>2</sup>  
Building are - 52,00 m<sup>2</sup>

### WHY CHOOSE MODERN HOUSE?



TOP QUALITY



ENERGY EFFICIENCY



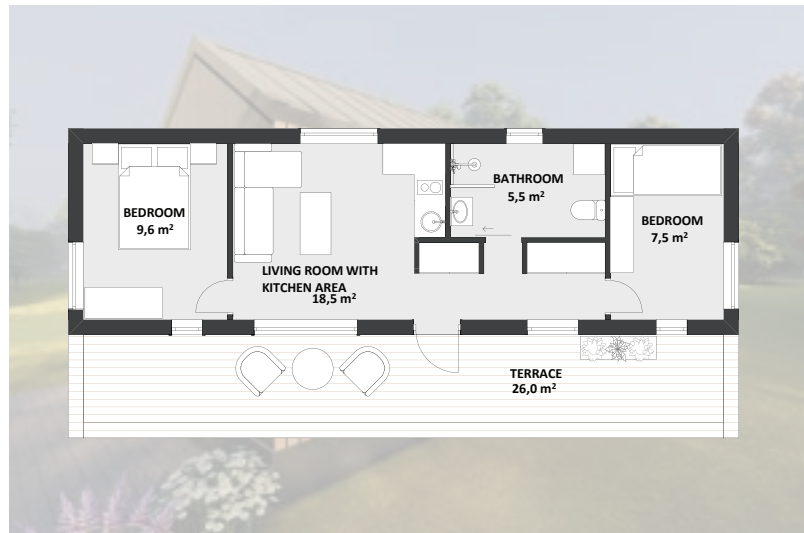
MODERN DESIGN



THOUGHTFUL PLANNING



CUSTOMIZED APPROACH AVAILABLE



## MODERN HOUSE OFFERS:

- ✓ DESIGN SERVICES  
(ARCHITECTURAL, HOME, CONSTRUCTION DESIGN)
- ✓ PRIVATE HOUSE CONSTRUCTION
- ✓ MODULAR HOUSE CONSTRUCTION
- ✓ CONSTRUCTION OF INDIVIDUAL PROJECTS
- ✓ 3D MODELING AND VISUALIZATION
- ✓ BUILDING PROJECT APPROVAL  
WITH LOCAL AUTHORITIES
- ✓ STRUCTURAL DESIGN PROJECTS FOR  
TIMBER FRAME BUILDINGS





## TIMBER FRAME MODULAR HOUSE IDRE 2

The project is designed with a practical, thoughtful layout and a modern visual solution. The concept of the house is designed to achieve an energy efficiency rating of A, which will have a positive impact on low monthly utility costs.

The construction of the building will be based on extensive experience in building and exporting houses to Sweden, and every feedback from our customers serves as a testament to the quality guarantee.

**Helvijs Ervalds | CEO | +371 25666622**

**info@modern-house.lv | www.modern-house.lv**

**@housemodern\_2021** **@ModernHouseLV**

LEARN MORE





## PORTABLE TIMBER FRAME MODULAR HOUSE

Living area - 41,40 m<sup>2</sup>  
Building are - 52,00 m<sup>2</sup>

### WHY CHOOSE MODERN HOUSE?



TOP QUALITY



ENERGY EFFICIENCY



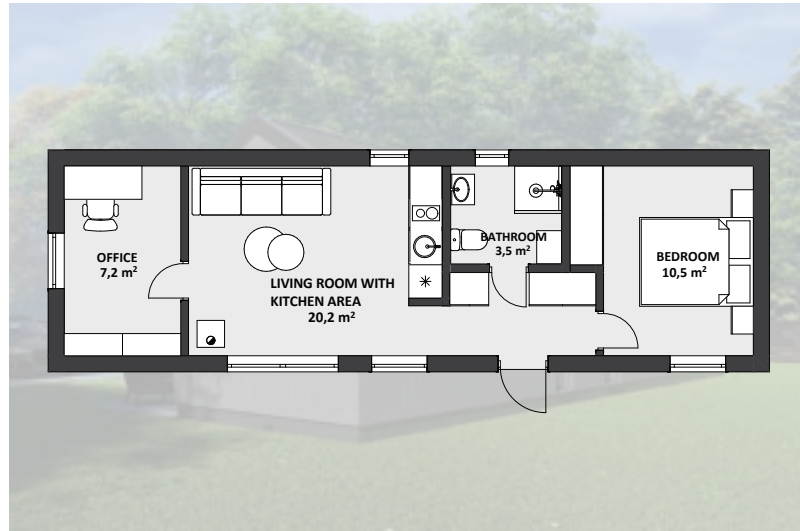
MODERN DESIGN



THOUGHTFUL PLANNING



CUSTOMIZED APPROACH  
AVAILABLE



## MODERN HOUSE OFFERS:

- ✓ DESIGN SERVICES  
(ARCHITECTURAL, HOME, CONSTRUCTION DESIGN)
- ✓ PRIVATE HOUSE CONSTRUCTION
- ✓ MODULAR HOUSE CONSTRUCTION
- ✓ CONSTRUCTION OF INDIVIDUAL PROJECTS
- ✓ 3D MODELING AND VISUALIZATION
- ✓ BUILDING PROJECT APPROVAL  
WITH LOCAL AUTHORITIES
- ✓ STRUCTURAL DESIGN PROJECTS FOR  
TIMBER FRAME BUILDINGS





## TIMBER FRAME MODULAR HOUSE IDRE 3

The project is designed with a practical, thoughtful layout and a modern visual solution. The concept of the house is designed to achieve an energy efficiency rating of A, which will have a positive impact on low monthly utility costs.

The construction of the building will be based on extensive experience in building and exporting houses to Sweden, and every feedback from our customers serves as a testament to the quality guarantee.

**Helvijs Ervalds | CEO | +371 25666622**

**info@modern-house.lv | www.modern-house.lv**

**@housemodern\_2021** **@ModernHouseLV**

**LEARN MORE**





## PORTABLE TIMBER FRAME MODULAR HOUSE

Living area - 50,20 m<sup>2</sup>  
Building are - 52,00 m<sup>2</sup>

### WHY CHOOSE MODERN HOUSE?



TOP QUALITY



ENERGY EFFICIENCY



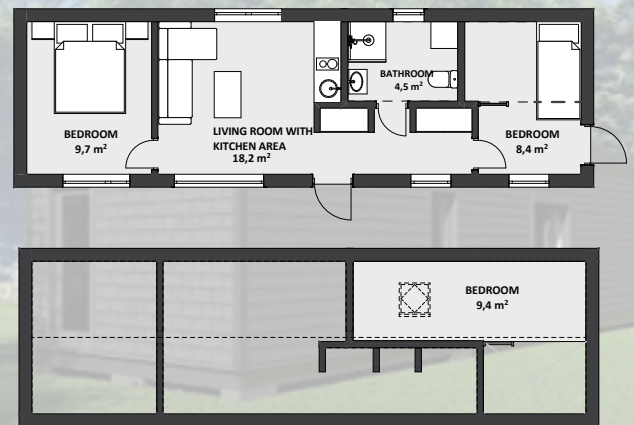
MODERN DESIGN



THOUGHTFUL PLANNING



CUSTOMIZED APPROACH AVAILABLE



## MODERN HOUSE OFFERS:

- ✓ DESIGN SERVICES (ARCHITECTURAL, HOME, CONSTRUCTION DESIGN)
- ✓ PRIVATE HOUSE CONSTRUCTION
- ✓ MODULAR HOUSE CONSTRUCTION
- ✓ CONSTRUCTION OF INDIVIDUAL PROJECTS
- ✓ 3D MODELING AND VISUALIZATION
- ✓ BUILDING PROJECT APPROVAL WITH LOCAL AUTHORITIES
- ✓ STRUCTURAL DESIGN PROJECTS FOR TIMBER FRAME BUILDINGS






## TIMBER FRAME MODULAR HOUSE LUND

The project is designed with a practical, thoughtful layout and a modern visual solution. The concept of the house is designed to achieve an energy efficiency rating of A, which will have a positive impact on low monthly utility costs.

The construction of the building will be based on extensive experience in building and exporting houses to Sweden, and every feedback from our customers serves as a testament to the quality guarantee.

**Helvijs Ervalds | CEO | +371 25666622**

**info@modern-house.lv | www.modern-house.lv**

**@housemodern\_2021**  **@ModernHouseLV**

**LEARN MORE**





## PORTABLE TIMBER FRAME MODULAR HOUSE

Living area - 40,95 m<sup>2</sup>  
Building are - 52,00 m<sup>2</sup>

### WHY CHOOSE MODERN HOUSE?



TOP QUALITY



ENERGY EFFICIENCY



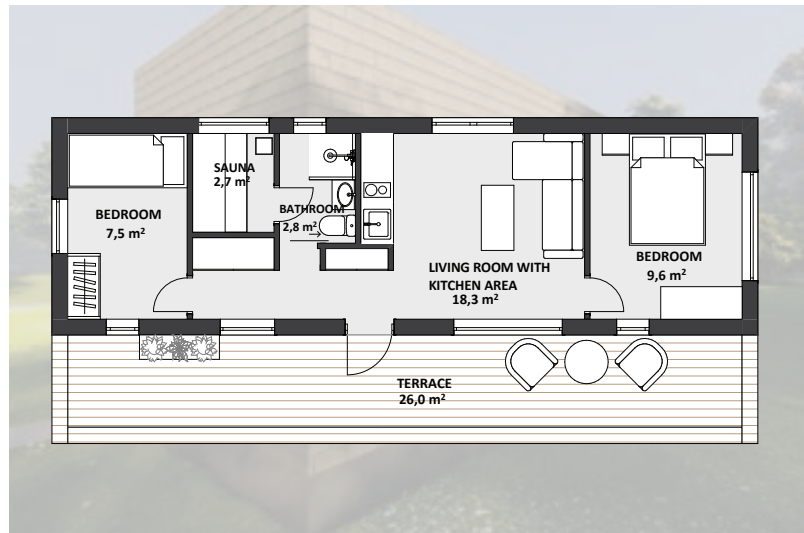
MODERN DESIGN



THOUGHTFUL PLANNING



CUSTOMIZED APPROACH  
AVAILABLE



## MODERN HOUSE OFFERS:

- ✓ DESIGN SERVICES  
(ARCHITECTURAL, HOME, CONSTRUCTION DESIGN)
- ✓ PRIVATE HOUSE CONSTRUCTION
- ✓ MODULAR HOUSE CONSTRUCTION
- ✓ CONSTRUCTION OF INDIVIDUAL PROJECTS
- ✓ 3D MODELING AND VISUALIZATION
- ✓ BUILDING PROJECT APPROVAL  
WITH LOCAL AUTHORITIES
- ✓ STRUCTURAL DESIGN PROJECTS FOR  
TIMBER FRAME BUILDINGS






## TIMBER FRAME MODULAR HOUSE MALMÖ

The project is designed with a practical, thoughtful layout and a modern visual solution. The concept of the house is designed to achieve an energy efficiency rating of A, which will have a positive impact on low monthly utility costs.

The construction of the building will be based on extensive experience in building and exporting houses to Sweden, and every feedback from our customers serves as a testament to the quality guarantee.

**Helvijs Ervalds | CEO | +371 25666622**

**info@modern-house.lv | www.modern-house.lv**

**@housemodern\_2021**  **@ModernHouseLV**

**LEARN MORE**





## PORTABLE TIMBER FRAME MODULAR HOUSE

Living area - 44,20 m<sup>2</sup>  
Building are - 34,80 m<sup>2</sup>

### WHY CHOOSE MODERN HOUSE?



TOP QUALITY



ENERGY EFFICIENCY



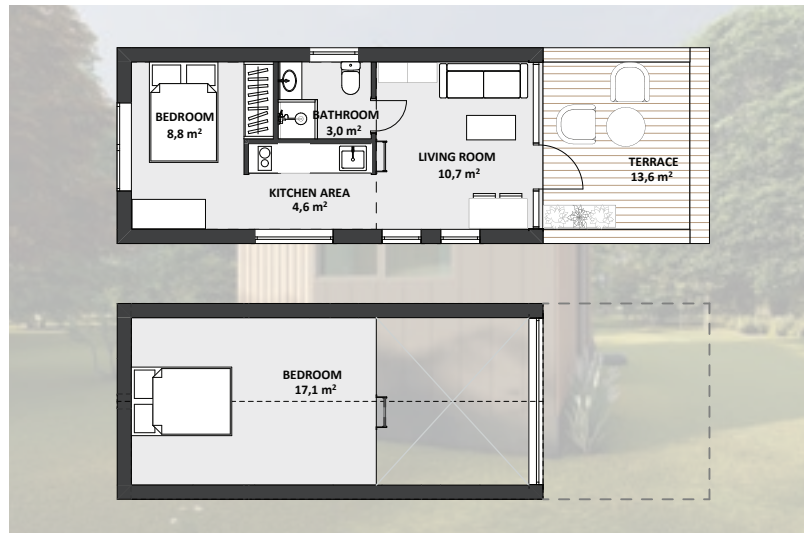
MODERN DESIGN



THOUGHTFUL PLANNING



CUSTOMIZED APPROACH AVAILABLE



## MODERN HOUSE OFFERS:

- ✓ DESIGN SERVICES  
(ARCHITECTURAL, HOME, CONSTRUCTION DESIGN)
- ✓ PRIVATE HOUSE CONSTRUCTION
- ✓ MODULAR HOUSE CONSTRUCTION
- ✓ CONSTRUCTION OF INDIVIDUAL PROJECTS
- ✓ 3D MODELING AND VISUALIZATION
- ✓ BUILDING PROJECT APPROVAL  
WITH LOCAL AUTHORITIES
- ✓ STRUCTURAL DESIGN PROJECTS FOR  
TIMBER FRAME BUILDINGS






## TIMBER FRAME MODULAR HOUSE MALMÖ 2

The project is designed with a practical, thoughtful layout and a modern visual solution. The concept of the house is designed to achieve an energy efficiency rating of A, which will have a positive impact on low monthly utility costs.

The construction of the building will be based on extensive experience in building and exporting houses to Sweden, and every feedback from our customers serves as a testament to the quality guarantee.

**Helvijs Ervalds | CEO | +371 25666622**

**info@modern-house.lv | www.modern-house.lv**

**@housemodern\_2021**  **@ModernHouseLV**

**LEARN MORE**





## PORTABLE TIMBER FRAME MODULAR HOUSE

Living area - 43,20 m<sup>2</sup>  
Building are - 38,00 m<sup>2</sup>

### WHY CHOOSE MODERN HOUSE?



TOP QUALITY



ENERGY EFFICIENCY



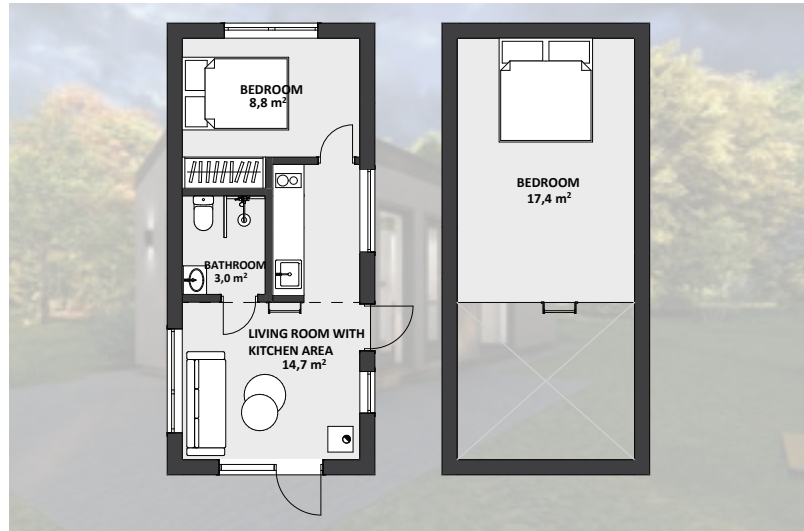
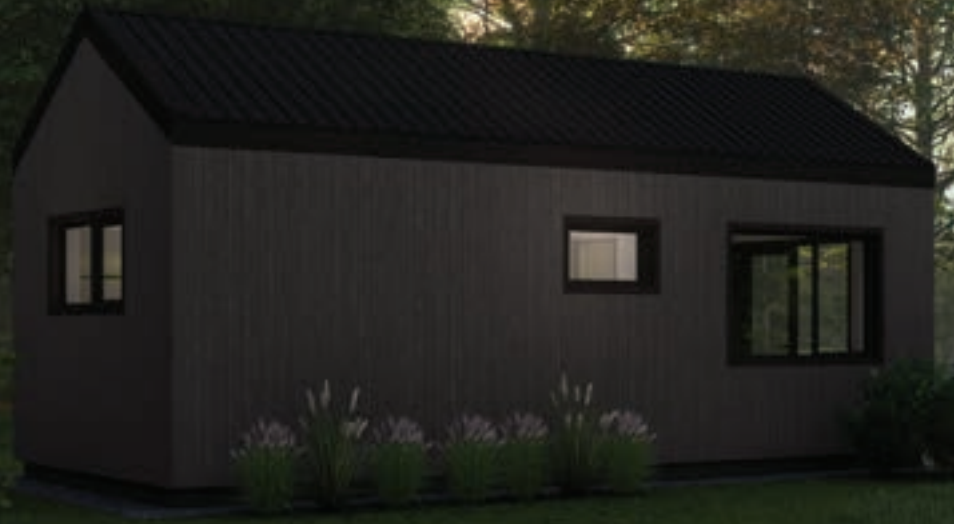
MODERN DESIGN



THOUGHTFUL PLANNING



CUSTOMIZED APPROACH AVAILABLE



## MODERN HOUSE OFFERS:

- ✓ DESIGN SERVICES  
(ARCHITECTURAL, HOME, CONSTRUCTION DESIGN)
- ✓ PRIVATE HOUSE CONSTRUCTION
- ✓ MODULAR HOUSE CONSTRUCTION
- ✓ CONSTRUCTION OF INDIVIDUAL PROJECTS
- ✓ 3D MODELING AND VISUALIZATION
- ✓ BUILDING PROJECT APPROVAL  
WITH LOCAL AUTHORITIES
- ✓ STRUCTURAL DESIGN PROJECTS FOR  
TIMBER FRAME BUILDINGS





## TIMBER FRAME MODULAR HOUSE MALMÖ 3

The project is designed with a practical, thoughtful layout and a modern visual solution. The concept of the house is designed to achieve an energy efficiency rating of A, which will have a positive impact on low monthly utility costs.

The construction of the building will be based on extensive experience in building and exporting houses to Sweden, and every feedback from our customers serves as a testament to the quality guarantee.

**Helvijs Ervalds | CEO | +371 25666622**

**info@modern-house.lv | www.modern-house.lv**

**@housemodern\_2021** **@ModernHouseLV**

LEARN MORE





## PORTABLE TIMBER FRAME MODULAR HOUSE

Living area - 44,00 m<sup>2</sup>  
Building are - 34,80 m<sup>2</sup>

### WHY CHOOSE MODERN HOUSE?



TOP QUALITY



ENERGY EFFICIENCY



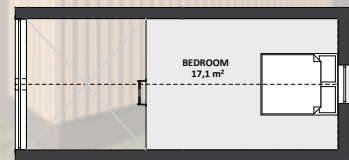
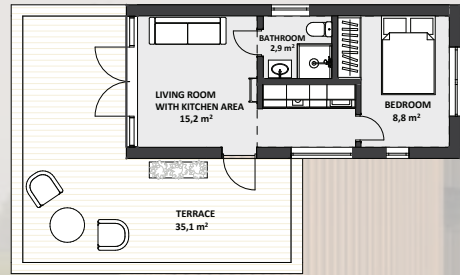
MODERN DESIGN



THOUGHTFUL PLANNING



CUSTOMIZED APPROACH AVAILABLE



## MODERN HOUSE OFFERS:

- ✓ DESIGN SERVICES (ARCHITECTURAL, HOME, CONSTRUCTION DESIGN)
- ✓ PRIVATE HOUSE CONSTRUCTION
- ✓ MODULAR HOUSE CONSTRUCTION
- ✓ CONSTRUCTION OF INDIVIDUAL PROJECTS
- ✓ 3D MODELING AND VISUALIZATION
- ✓ BUILDING PROJECT APPROVAL WITH LOCAL AUTHORITIES
- ✓ STRUCTURAL DESIGN PROJECTS FOR TIMBER FRAME BUILDINGS






## TIMBER FRAME MODULAR HOUSE ÖREBRO

The project is designed with a practical, thoughtful layout and a modern visual solution. The concept of the house is designed to achieve an energy efficiency rating of A, which will have a positive impact on low monthly utility costs.

The construction of the building will be based on extensive experience in building and exporting houses to Sweden, and every feedback from our customers serves as a testament to the quality guarantee.

**Helvijs Ervalds | CEO | +371 25666622**

**info@modern-house.lv | www.modern-house.lv**

**@housemodern\_2021**  **@ModernHouseLV**

**LEARN MORE**





## PORTABLE TIMBER FRAME MODULAR HOUSE

Living area - 41,55 m<sup>2</sup>  
Building are - 52,00 m<sup>2</sup>

### WHY CHOOSE MODERN HOUSE?



TOP QUALITY



ENERGY EFFICIENCY



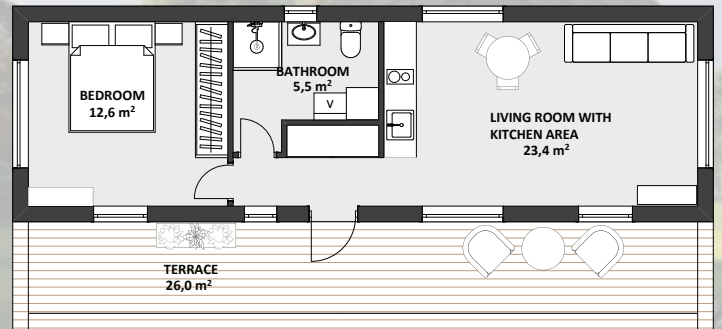
MODERN DESIGN



THOUGHTFUL PLANNING



CUSTOMIZED APPROACH  
AVAILABLE



## MODERN HOUSE OFFERS:

- ✓ DESIGN SERVICES  
(ARCHITECTURAL, HOME, CONSTRUCTION DESIGN)
- ✓ PRIVATE HOUSE CONSTRUCTION
- ✓ MODULAR HOUSE CONSTRUCTION
- ✓ CONSTRUCTION OF INDIVIDUAL PROJECTS
- ✓ 3D MODELING AND VISUALIZATION
- ✓ BUILDING PROJECT APPROVAL  
WITH LOCAL AUTHORITIES
- ✓ STRUCTURAL DESIGN PROJECTS FOR  
TIMBER FRAME BUILDINGS






## TIMBER FRAME MODULAR HOUSE ÖREBRO 2

The project is designed with a practical, thoughtful layout and a modern visual solution. The concept of the house is designed to achieve an energy efficiency rating of A, which will have a positive impact on low monthly utility costs.

The construction of the building will be based on extensive experience in building and exporting houses to Sweden, and every feedback from our customers serves as a testament to the quality guarantee.

**Helvijs Ervalds | CEO | +371 25666622**

**info@modern-house.lv | www.modern-house.lv**

**@housemodern\_2021**  **@ModernHouseLV**

LEARN MORE





## PORTABLE TIMBER FRAME MODULAR HOUSE

Living area - 43,00 m<sup>2</sup>  
Building are - 60,00 m<sup>2</sup>

### WHY CHOOSE MODERN HOUSE?



TOP QUALITY



ENERGY EFFICIENCY



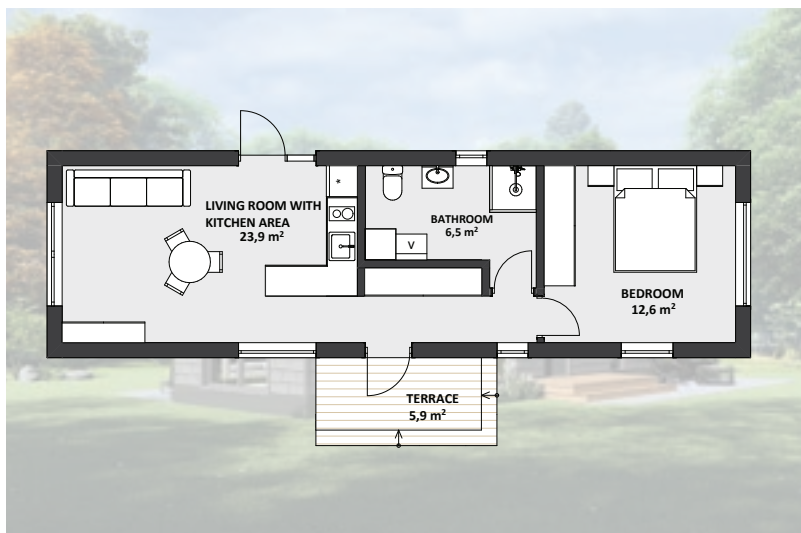
MODERN DESIGN



THOUGHTFUL PLANNING



CUSTOMIZED APPROACH AVAILABLE



## MODERN HOUSE OFFERS:

- ✓ DESIGN SERVICES (ARCHITECTURAL, HOME, CONSTRUCTION DESIGN)
- ✓ PRIVATE HOUSE CONSTRUCTION
- ✓ MODULAR HOUSE CONSTRUCTION
- ✓ CONSTRUCTION OF INDIVIDUAL PROJECTS
- ✓ 3D MODELING AND VISUALIZATION
- ✓ BUILDING PROJECT APPROVAL WITH LOCAL AUTHORITIES
- ✓ STRUCTURAL DESIGN PROJECTS FOR TIMBER FRAME BUILDINGS






## TIMBER FRAME MODULAR HOUSE UMEÅ

The project is designed with a practical, thoughtful layout and a modern visual solution. The concept of the house is designed to achieve an energy efficiency rating of A, which will have a positive impact on low monthly utility costs.

The construction of the building will be based on extensive experience in building and exporting houses to Sweden, and every feedback from our customers serves as a testament to the quality guarantee.

**Helvijs Ervalds | CEO | +371 25666622**

**info@modern-house.lv | www.modern-house.lv**

**@housemodern\_2021**  **@ModernHouseLV**

**LEARN MORE**





## PORTABLE TIMBER FRAME MODULAR HOUSE

Living area - 49,30 m<sup>2</sup>  
Building are - 38,00 m<sup>2</sup>

### WHY CHOOSE MODERN HOUSE?



TOP QUALITY



ENERGY EFFICIENCY



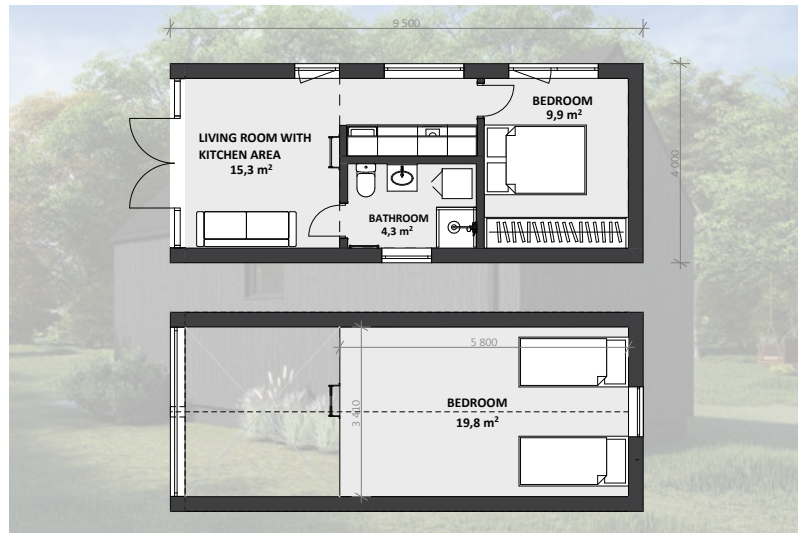
MODERN DESIGN



THOUGHTFUL PLANNING



CUSTOMIZED APPROACH  
AVAILABLE



## MODERN HOUSE OFFERS:

- ✓ DESIGN SERVICES  
(ARCHITECTURAL, HOME, CONSTRUCTION DESIGN)
- ✓ PRIVATE HOUSE CONSTRUCTION
- ✓ MODULAR HOUSE CONSTRUCTION
- ✓ CONSTRUCTION OF INDIVIDUAL PROJECTS
- ✓ 3D MODELING AND VISUALIZATION
- ✓ BUILDING PROJECT APPROVAL  
WITH LOCAL AUTHORITIES
- ✓ STRUCTURAL DESIGN PROJECTS FOR  
TIMBER FRAME BUILDINGS






## TIMBER FRAME MODULAR HOUSE VISBY

The project is designed with a practical, thoughtful layout and a modern visual solution. The concept of the house is designed to achieve an energy efficiency rating of A, which will have a positive impact on low monthly utility costs.

The construction of the building will be based on extensive experience in building and exporting houses to Sweden, and every feedback from our customers serves as a testament to the quality guarantee.

**Helvijs Ervalds | CEO | +371 25666622**

**info@modern-house.lv | www.modern-house.lv**

**@housemodern\_2021**  **@ModernHouseLV**

LEARN MORE





## PORTABLE TIMBER FRAME MODULAR HOUSE

Living area - 36,40 m<sup>2</sup>  
Building are - 34,80 m<sup>2</sup>

### WHY CHOOSE MODERN HOUSE?



TOP QUALITY



ENERGY EFFICIENCY



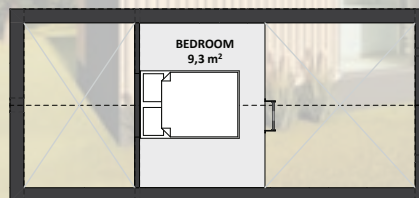
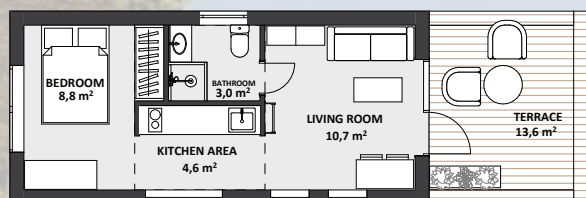
MODERN DESIGN



THOUGHTFUL PLANNING



CUSTOMIZED APPROACH  
AVAILABLE



## MODERN HOUSE OFFERS:

- ✓ DESIGN SERVICES  
(ARCHITECTURAL, HOME, CONSTRUCTION DESIGN)
- ✓ PRIVATE HOUSE CONSTRUCTION
- ✓ MODULAR HOUSE CONSTRUCTION
- ✓ CONSTRUCTION OF INDIVIDUAL PROJECTS
- ✓ 3D MODELING AND VISUALIZATION
- ✓ BUILDING PROJECT APPROVAL  
WITH LOCAL AUTHORITIES
- ✓ STRUCTURAL DESIGN PROJECTS FOR  
TIMBER FRAME BUILDINGS