




TWO-STORY TIMBER FRAME HOUSE GÖTEBORG

The project is designed with a practical, thoughtful layout and a modern visual solution. The concept of the house is designed to achieve an energy efficiency rating of A, which will have a positive impact on low monthly utility costs.

The construction of the building will be based on extensive experience in building and exporting houses to Sweden, and every feedback from our customers serves as a testament to the quality guarantee.

Helvijs Ervalds | CEO | +371 25666622

info@modern-house.lv | www.modern-house.lv

@housemodern_2021  **@ModernHouseLV**

LEARN MORE



TWO-STORY TIMBER FRAME HOUSE

Living area - 180,90 m²
Building area - 235,20 m²

WHY CHOOSE MODERN HOUSE?



TOP QUALITY



ENERGY EFFICIENCY



MODERN DESIGN



THOUGHTFUL PLANNING



CUSTOMIZED APPROACH AVAILABLE



MODERN HOUSE OFFERS:

- ✓ **DESIGN SERVICES**
(ARCHITECTURAL, HOME, CONSTRUCTION DESIGN)
- ✓ **PRIVATE HOUSE CONSTRUCTION**
- ✓ **MODULAR HOUSE CONSTRUCTION**
- ✓ **CONSTRUCTION OF INDIVIDUAL PROJECTS**
- ✓ **3D MODELING AND VISUALIZATION**
- ✓ **BUILDING PROJECT APPROVAL WITH LOCAL AUTHORITIES**
- ✓ **STRUCTURAL DESIGN PROJECTS FOR TIMBER FRAME BUILDINGS**



TWO-STORY TIMBER FRAME HOUSE EKERÖ

The project is designed with a practical, thoughtful layout and a modern visual solution. The concept of the house is designed to achieve an energy efficiency rating of A, which will have a positive impact on low monthly utility costs.

The construction of the building will be based on extensive experience in building and exporting houses to Sweden, and every feedback from our customers serves as a testament to the quality guarantee.

Helvijs Ervalds | CEO | +371 25666622

info@modern-house.lv | www.modern-house.lv

@housemodern_2021 **@ModernHouseLV**

LEARN MORE



TWO-STORY TIMBER FRAME HOUSE

Living area - 168,30 m²
Building area - 249,20 m²

WHY CHOOSE MODERN HOUSE?



TOP QUALITY



ENERGY EFFICIENCY



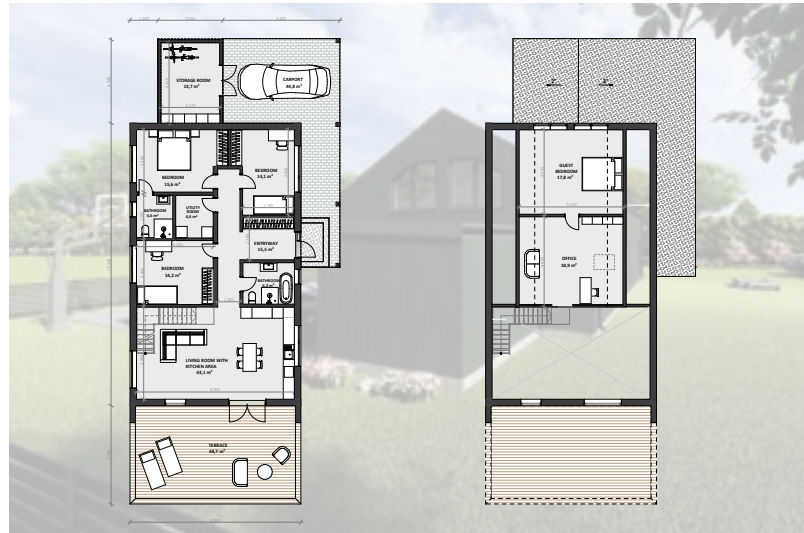
MODERN DESIGN



THOUGHTFUL PLANNING



CUSTOMIZED APPROACH AVAILABLE



MODERN HOUSE OFFERS:

- ✓ DESIGN SERVICES
(ARCHITECTURAL, HOME, CONSTRUCTION DESIGN)
- ✓ PRIVATE HOUSE CONSTRUCTION
- ✓ MODULAR HOUSE CONSTRUCTION
- ✓ CONSTRUCTION OF INDIVIDUAL PROJECTS
- ✓ 3D MODELING AND VISUALIZATION
- ✓ BUILDING PROJECT APPROVAL
WITH LOCAL AUTHORITIES
- ✓ STRUCTURAL DESIGN PROJECTS FOR
TIMBER FRAME BUILDINGS





ONE-STORY TIMBER FRAME HOUSE ESKILSTUNA

The project is designed with a practical, thoughtful layout and a modern visual solution. The concept of the house is designed to achieve an energy efficiency rating of A, which will have a positive impact on low monthly utility costs.

The construction of the building will be based on extensive experience in building and exporting houses to Sweden, and every feedback from our customers serves as a testament to the quality guarantee.

Helvijs Ervalds | CEO | +371 25666622

info@modern-house.lv | www.modern-house.lv

 [@housemodern_2021](https://www.instagram.com/housemodern_2021)  [@ModernHouseLV](https://www.facebook.com/ModernHouseLV)

LEARN MORE



ONE-STORY TIMBER FRAME HOUSE

Living area - 101,70 m²
Building area - 174,40 m²

WHY CHOOSE MODERN HOUSE?

- ✓ TOP QUALITY
- 💡 ENERGY EFFICIENCY
- 🏠 MODERN DESIGN
- 📐 THOUGHTFUL PLANNING
- 🔧 CUSTOMIZED APPROACH AVAILABLE



MODERN HOUSE OFFERS:

- ✓ DESIGN SERVICES
(ARCHITECTURAL, HOME, CONSTRUCTION DESIGN)
- ✓ PRIVATE HOUSE CONSTRUCTION
- ✓ MODULAR HOUSE CONSTRUCTION
- ✓ CONSTRUCTION OF INDIVIDUAL PROJECTS
- ✓ 3D MODELING AND VISUALIZATION
- ✓ BUILDING PROJECT APPROVAL
WITH LOCAL AUTHORITIES
- ✓ STRUCTURAL DESIGN PROJECTS FOR
TIMBER FRAME BUILDINGS




ONE-STORY TIMBER FRAME HOUSE HALMSTAD

The project is designed with a practical, thoughtful layout and a modern visual solution. The concept of the house is designed to achieve an energy efficiency rating of A, which will have a positive impact on low monthly utility costs.

The construction of the building will be based on extensive experience in building and exporting houses to Sweden, and every feedback from our customers serves as a testament to the quality guarantee.

Helvijs Ervalds | CEO | +371 25666622

info@modern-house.lv | www.modern-house.lv

@housemodern_2021  **@ModernHouseLV**

LEARN MORE



ONE-STORY TIMBER FRAME HOUSE

Living area - 159,90 m²
Building area - 221,00 m²

WHY CHOOSE MODERN HOUSE?



TOP QUALITY



ENERGY EFFICIENCY



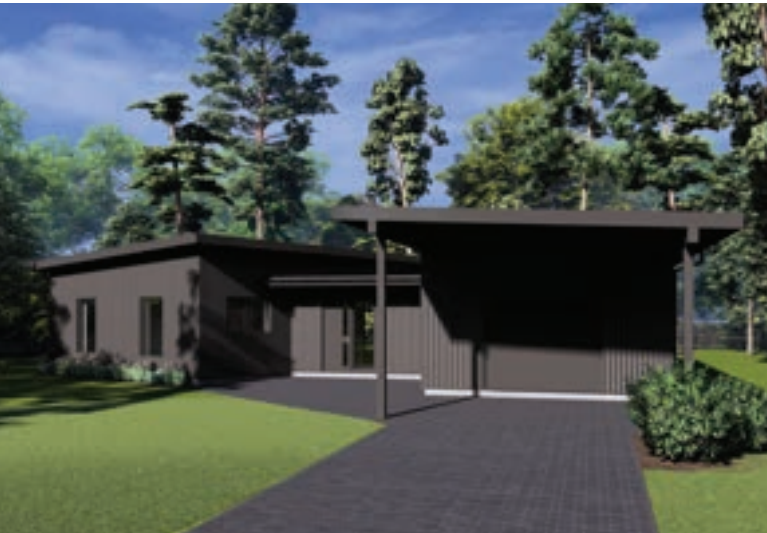
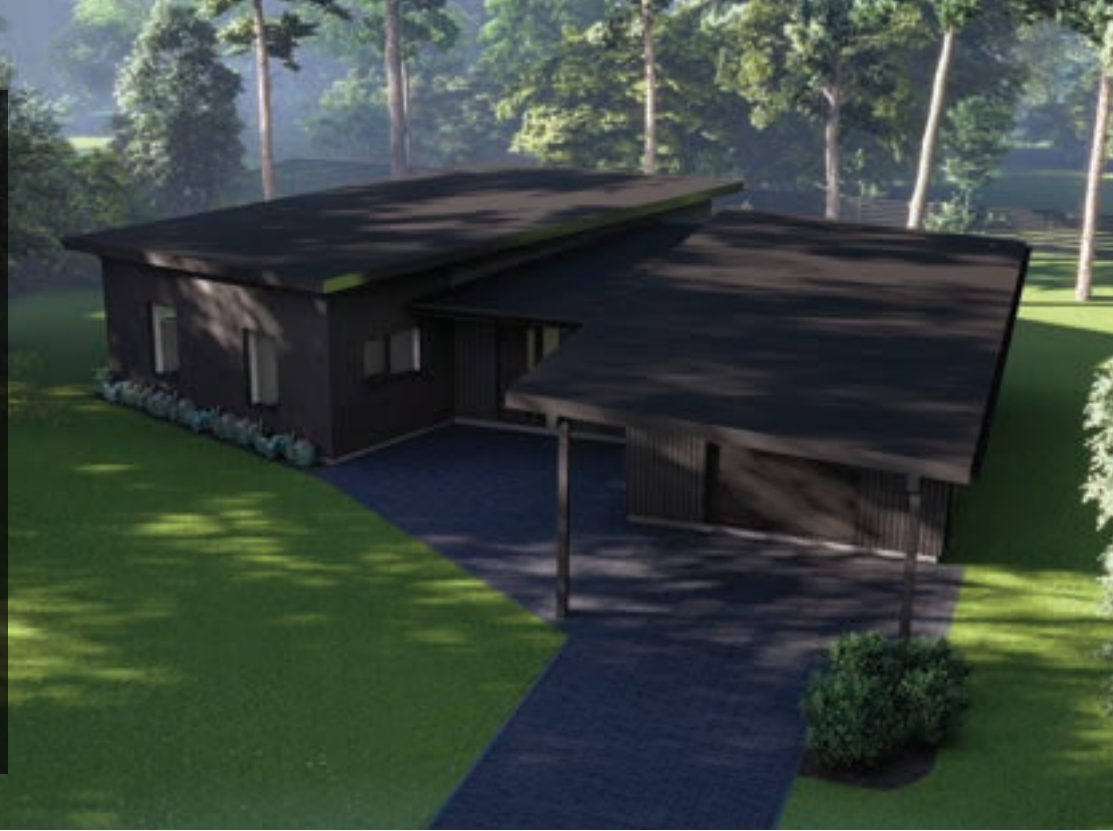
MODERN DESIGN



THOUGHTFUL PLANNING



CUSTOMIZED APPROACH AVAILABLE



MODERN HOUSE OFFERS:

- ✓ DESIGN SERVICES
(ARCHITECTURAL, HOME, CONSTRUCTION DESIGN)
- ✓ PRIVATE HOUSE CONSTRUCTION
- ✓ MODULAR HOUSE CONSTRUCTION
- ✓ CONSTRUCTION OF INDIVIDUAL PROJECTS
- ✓ 3D MODELING AND VISUALIZATION
- ✓ BUILDING PROJECT APPROVAL
WITH LOCAL AUTHORITIES
- ✓ STRUCTURAL DESIGN PROJECTS FOR
TIMBER FRAME BUILDINGS



ONE-STORY TIMBER FRAME HOUSE HELSINGBORG

The project is designed with a practical, thoughtful layout and a modern visual solution. The concept of the house is designed to achieve an energy efficiency rating of A, which will have a positive impact on low monthly utility costs.

The construction of the building will be based on extensive experience in building and exporting houses to Sweden, and every feedback from our customers serves as a testament to the quality guarantee.

Helvijs Ervalds | CEO | +371 25666622

info@modern-house.lv | www.modern-house.lv

 **@housemodern_2021**  **@ModernHouseLV**

LEARN MORE



ONE-STORY TIMBER FRAME HOUSE

Living area - 111,90 m²
Building area - 160,40 m²

WHY CHOOSE MODERN HOUSE?

- ✓ TOP QUALITY
- 💡 ENERGY EFFICIENCY
- 🏠 MODERN DESIGN
- 📐 THOUGHTFUL PLANNING
- 🔧 CUSTOMIZED APPROACH AVAILABLE



MODERN HOUSE OFFERS:

- ✓ DESIGN SERVICES (ARCHITECTURAL, HOME, CONSTRUCTION DESIGN)
- ✓ PRIVATE HOUSE CONSTRUCTION
- ✓ MODULAR HOUSE CONSTRUCTION
- ✓ CONSTRUCTION OF INDIVIDUAL PROJECTS
- ✓ 3D MODELING AND VISUALIZATION
- ✓ BUILDING PROJECT APPROVAL WITH LOCAL AUTHORITIES
- ✓ STRUCTURAL DESIGN PROJECTS FOR TIMBER FRAME BUILDINGS




TWO-STORY TIMBER FRAME HOUSE KIRUNA

The project is designed with a practical, thoughtful layout and a modern visual solution. The concept of the house is designed to achieve an energy efficiency rating of A, which will have a positive impact on low monthly utility costs.

The construction of the building will be based on extensive experience in building and exporting houses to Sweden, and every feedback from our customers serves as a testament to the quality guarantee.

Helvijs Ervalds | CEO | +371 25666622

info@modern-house.lv | www.modern-house.lv

@housemodern_2021  **@ModernHouseLV**

LEARN MORE



TWO-STORY TIMBER FRAME HOUSE

Living area - 152,70 m²
Building area - 225,00 m²

WHY CHOOSE MODERN HOUSE?



TOP QUALITY



ENERGY EFFICIENCY



MODERN DESIGN



THOUGHTFUL PLANNING



CUSTOMIZED APPROACH AVAILABLE



MODERN HOUSE OFFERS:

- ✓ DESIGN SERVICES (ARCHITECTURAL, HOME, CONSTRUCTION DESIGN)
- ✓ PRIVATE HOUSE CONSTRUCTION
- ✓ MODULAR HOUSE CONSTRUCTION
- ✓ CONSTRUCTION OF INDIVIDUAL PROJECTS
- ✓ 3D MODELING AND VISUALIZATION
- ✓ BUILDING PROJECT APPROVAL WITH LOCAL AUTHORITIES
- ✓ STRUCTURAL DESIGN PROJECTS FOR TIMBER FRAME BUILDINGS




TWO-STORY TIMBER FRAME HOUSE LINKÖPING

The project is designed with a practical, thoughtful layout and a modern visual solution. The concept of the house is designed to achieve an energy efficiency rating of A, which will have a positive impact on low monthly utility costs.

The construction of the building will be based on extensive experience in building and exporting houses to Sweden, and every feedback from our customers serves as a testament to the quality guarantee.

Helvijs Ervalds | CEO | +371 25666622

info@modern-house.lv | www.modern-house.lv

@housemodern_2021  **@ModernHouseLV**

LEARN MORE



TWO-STORY TIMBER FRAME HOUSE

Living area - 150,50 m²
Building area - 158,40 m²

WHY CHOOSE MODERN HOUSE?



TOP QUALITY



ENERGY EFFICIENCY



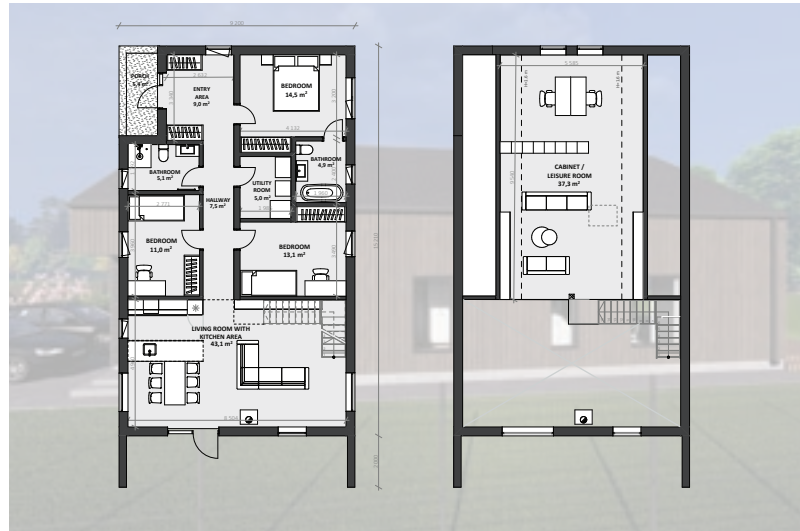
MODERN DESIGN



THOUGHTFUL PLANNING



CUSTOMIZED APPROACH AVAILABLE



MODERN HOUSE OFFERS:

- ✓ DESIGN SERVICES (ARCHITECTURAL, HOME, CONSTRUCTION DESIGN)
- ✓ PRIVATE HOUSE CONSTRUCTION
- ✓ MODULAR HOUSE CONSTRUCTION
- ✓ CONSTRUCTION OF INDIVIDUAL PROJECTS
- ✓ 3D MODELING AND VISUALIZATION
- ✓ BUILDING PROJECT APPROVAL WITH LOCAL AUTHORITIES
- ✓ STRUCTURAL DESIGN PROJECTS FOR TIMBER FRAME BUILDINGS




TWO-STORY TIMBER FRAME HOUSE LUDVIKA

The project is designed with a practical, thoughtful layout and a modern visual solution. The concept of the house is designed to achieve an energy efficiency rating of A, which will have a positive impact on low monthly utility costs.

The construction of the building will be based on extensive experience in building and exporting houses to Sweden, and every feedback from our customers serves as a testament to the quality guarantee.

Helvijs Ervalds | CEO | +371 25666622

info@modern-house.lv | www.modern-house.lv

@housemodern_2021  **@ModernHouseLV**

LEARN MORE



TWO-STORY TIMBER FRAME HOUSE

Living area - 225,60 m²
Building area - 169,50 m²

WHY CHOOSE MODERN HOUSE?



TOP QUALITY



ENERGY EFFICIENCY



MODERN DESIGN



THOUGHTFUL PLANNING



CUSTOMIZED APPROACH AVAILABLE



MODERN HOUSE OFFERS:

- ✓ DESIGN SERVICES (ARCHITECTURAL, HOME, CONSTRUCTION DESIGN)
- ✓ PRIVATE HOUSE CONSTRUCTION
- ✓ MODULAR HOUSE CONSTRUCTION
- ✓ CONSTRUCTION OF INDIVIDUAL PROJECTS
- ✓ 3D MODELING AND VISUALIZATION
- ✓ BUILDING PROJECT APPROVAL WITH LOCAL AUTHORITIES
- ✓ STRUCTURAL DESIGN PROJECTS FOR TIMBER FRAME BUILDINGS



ONE-STORY TIMBER FRAME HOUSE NORRTÄLJE

The project is designed with a practical, thoughtful layout and a modern visual solution. The concept of the house is designed to achieve an energy efficiency rating of A, which will have a positive impact on low monthly utility costs.

The construction of the building will be based on extensive experience in building and exporting houses to Sweden, and every feedback from our customers serves as a testament to the quality guarantee.

Helvijs Ervalds | CEO | +371 25666622

info@modern-house.lv | www.modern-house.lv

@housemodern_2021 **@ModernHouseLV**

LEARN MORE

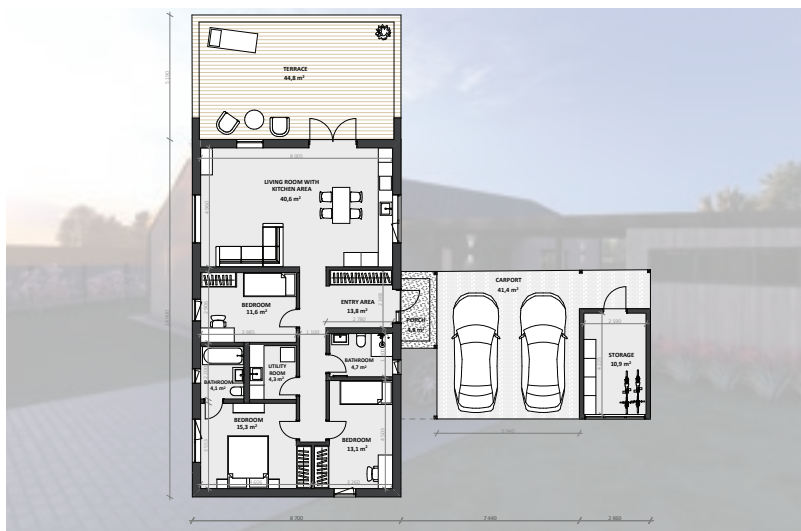


ONE-STORY TIMBER FRAME HOUSE

Living area - 118,74 m²
Building area - 238,10 m²

WHY CHOOSE MODERN HOUSE?

- ✓ TOP QUALITY
- 💡 ENERGY EFFICIENCY
- 🏠 MODERN DESIGN
- 📐 THOUGHTFUL PLANNING
- 🤝 CUSTOMIZED APPROACH AVAILABLE



MODERN HOUSE OFFERS:

- ✓ DESIGN SERVICES (ARCHITECTURAL, HOME, CONSTRUCTION DESIGN)
- ✓ PRIVATE HOUSE CONSTRUCTION
- ✓ MODULAR HOUSE CONSTRUCTION
- ✓ CONSTRUCTION OF INDIVIDUAL PROJECTS
- ✓ 3D MODELING AND VISUALIZATION
- ✓ BUILDING PROJECT APPROVAL WITH LOCAL AUTHORITIES
- ✓ STRUCTURAL DESIGN PROJECTS FOR TIMBER FRAME BUILDINGS




ONE-STORY TIMBER FRAME HOUSE RONNEBY

The project is designed with a practical, thoughtful layout and a modern visual solution. The concept of the house is designed to achieve an energy efficiency rating of A, which will have a positive impact on low monthly utility costs.

The construction of the building will be based on extensive experience in building and exporting houses to Sweden, and every feedback from our customers serves as a testament to the quality guarantee.

Helvijs Ervalds | CEO | +371 25666622

info@modern-house.lv | www.modern-house.lv

@housemodern_2021  **@ModernHouseLV**

LEARN MORE



ONE-STORY TIMBER FRAME HOUSE

Living area - 109,40 m²
Building area - 203,40 m²

WHY CHOOSE MODERN HOUSE?



TOP QUALITY



ENERGY EFFICIENCY



MODERN DESIGN



THOUGHTFUL PLANNING



CUSTOMIZED APPROACH AVAILABLE



MODERN HOUSE OFFERS:

- ✓ DESIGN SERVICES (ARCHITECTURAL, HOME, CONSTRUCTION DESIGN)
- ✓ PRIVATE HOUSE CONSTRUCTION
- ✓ MODULAR HOUSE CONSTRUCTION
- ✓ CONSTRUCTION OF INDIVIDUAL PROJECTS
- ✓ 3D MODELING AND VISUALIZATION
- ✓ BUILDING PROJECT APPROVAL WITH LOCAL AUTHORITIES
- ✓ STRUCTURAL DESIGN PROJECTS FOR TIMBER FRAME BUILDINGS




TWO-STORY TIMBER FRAME HOUSE SIGTUNA

The project is designed with a practical, thoughtful layout and a modern visual solution. The concept of the house is designed to achieve an energy efficiency rating of A, which will have a positive impact on low monthly utility costs.

The construction of the building will be based on extensive experience in building and exporting houses to Sweden, and every feedback from our customers serves as a testament to the quality guarantee.

Helvijs Ervalds | CEO | +371 25666622

info@modern-house.lv | www.modern-house.lv

@housemodern_2021  **@ModernHouseLV**

LEARN MORE



TWO-STORY TIMBER FRAME HOUSE

Living area - 148,40 m²
Building area - 296,20 m²

WHY CHOOSE MODERN HOUSE?



TOP QUALITY



ENERGY EFFICIENCY



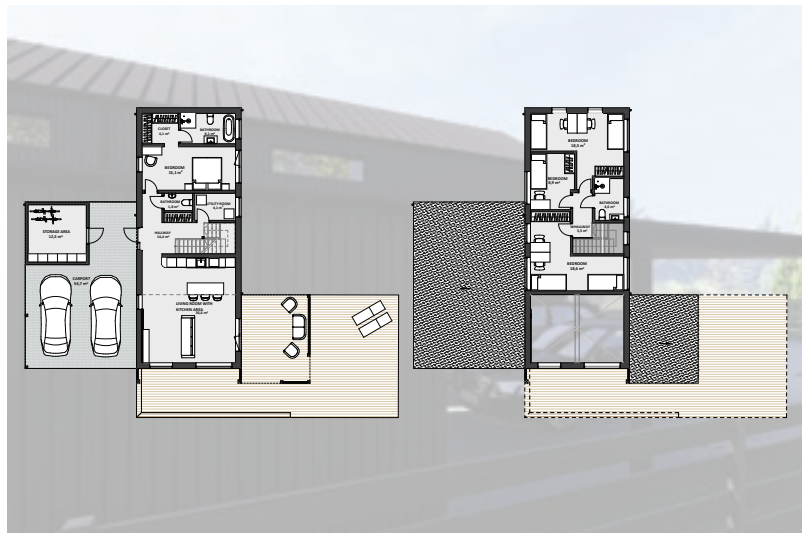
MODERN DESIGN



THOUGHTFUL PLANNING



CUSTOMIZED APPROACH AVAILABLE



MODERN HOUSE OFFERS:

- ✓ DESIGN SERVICES
(ARCHITECTURAL, HOME, CONSTRUCTION DESIGN)
- ✓ PRIVATE HOUSE CONSTRUCTION
- ✓ MODULAR HOUSE CONSTRUCTION
- ✓ CONSTRUCTION OF INDIVIDUAL PROJECTS
- ✓ 3D MODELING AND VISUALIZATION
- ✓ BUILDING PROJECT APPROVAL
WITH LOCAL AUTHORITIES
- ✓ STRUCTURAL DESIGN PROJECTS FOR
TIMBER FRAME BUILDINGS




ONE-STORY TIMBER FRAME HOUSE SOLLENTUNA

The project is designed with a practical, thoughtful layout and a modern visual solution. The concept of the house is designed to achieve an energy efficiency rating of A, which will have a positive impact on low monthly utility costs.

The construction of the building will be based on extensive experience in building and exporting houses to Sweden, and every feedback from our customers serves as a testament to the quality guarantee.

Helvijs Ervalds | CEO | +371 25666622

info@modern-house.lv | www.modern-house.lv

@housemodern_2021  **@ModernHouseLV**

LEARN MORE



ONE-STORY TIMBER FRAME HOUSE

Living area - 116,40 m²
Building area - 182,20 m²

WHY CHOOSE MODERN HOUSE?

- ✓ TOP QUALITY
- 💡 ENERGY EFFICIENCY
- 🏠 MODERN DESIGN
- 📐 THOUGHTFUL PLANNING
- 🤝 CUSTOMIZED APPROACH AVAILABLE



MODERN HOUSE OFFERS:

- ✓ DESIGN SERVICES (ARCHITECTURAL, HOME, CONSTRUCTION DESIGN)
- ✓ PRIVATE HOUSE CONSTRUCTION
- ✓ MODULAR HOUSE CONSTRUCTION
- ✓ CONSTRUCTION OF INDIVIDUAL PROJECTS
- ✓ 3D MODELING AND VISUALIZATION
- ✓ BUILDING PROJECT APPROVAL WITH LOCAL AUTHORITIES
- ✓ STRUCTURAL DESIGN PROJECTS FOR TIMBER FRAME BUILDINGS



TWO-STORY TIMBER FRAME HOUSE STOCKHOLM

The project is designed with a practical, thoughtful layout and a modern visual solution. The concept of the house is designed to achieve an energy efficiency rating of A, which will have a positive impact on low monthly utility costs.

The construction of the building will be based on extensive experience in building and exporting houses to Sweden, and every feedback from our customers serves as a testament to the quality guarantee.

Helvijs Ervalds | CEO | +371 25666622

info@modern-house.lv | www.modern-house.lv

@housemodern_2021 **@ModernHouseLV**

LEARN MORE



TWO-STORY TIMBER FRAME HOUSE

Living area - 159,70 m²
Building area - 220,80 m²

WHY CHOOSE MODERN HOUSE?

- ✓ TOP QUALITY
- 💡 ENERGY EFFICIENCY
- 🏠 MODERN DESIGN
- 📐 THOUGHTFUL PLANNING
- 🤝 CUSTOMIZED APPROACH AVAILABLE



MODERN HOUSE OFFERS:

- ✓ DESIGN SERVICES
(ARCHITECTURAL, HOME, CONSTRUCTION DESIGN)
- ✓ PRIVATE HOUSE CONSTRUCTION
- ✓ MODULAR HOUSE CONSTRUCTION
- ✓ CONSTRUCTION OF INDIVIDUAL PROJECTS
- ✓ 3D MODELING AND VISUALIZATION
- ✓ BUILDING PROJECT APPROVAL
WITH LOCAL AUTHORITIES
- ✓ STRUCTURAL DESIGN PROJECTS FOR
TIMBER FRAME BUILDINGS



TWO-STORY TIMBER FRAME HOUSE UPPSALA

The project is designed with a practical, thoughtful layout and a modern visual solution. The concept of the house is designed to achieve an energy efficiency rating of A, which will have a positive impact on low monthly utility costs.

The construction of the building will be based on extensive experience in building and exporting houses to Sweden, and every feedback from our customers serves as a testament to the quality guarantee.

Helvijs Ervalds | CEO | +371 25666622

info@modern-house.lv | www.modern-house.lv

@housemodern_2021 **@ModernHouseLV**

LEARN MORE



TWO-STORY TIMBER FRAME HOUSE

Living area - 159,20 m²
Building area - 215,03 m²

WHY CHOOSE MODERN HOUSE?

- ✓ TOP QUALITY
- 💡 ENERGY EFFICIENCY
- 🏠 MODERN DESIGN
- 📐 THOUGHTFUL PLANNING
- 🤝 CUSTOMIZED APPROACH AVAILABLE



MODERN HOUSE OFFERS:

- ✓ DESIGN SERVICES
(ARCHITECTURAL, HOME, CONSTRUCTION DESIGN)
- ✓ PRIVATE HOUSE CONSTRUCTION
- ✓ MODULAR HOUSE CONSTRUCTION
- ✓ CONSTRUCTION OF INDIVIDUAL PROJECTS
- ✓ 3D MODELING AND VISUALIZATION
- ✓ BUILDING PROJECT APPROVAL
WITH LOCAL AUTHORITIES
- ✓ STRUCTURAL DESIGN PROJECTS FOR
TIMBER FRAME BUILDINGS



TWO-STORY TIMBER FRAME HOUSE FALUN

The project is designed with a practical, thoughtful layout and a modern visual solution. The concept of the house is designed to achieve an energy efficiency rating of A, which will have a positive impact on low monthly utility costs.

The construction of the building will be based on extensive experience in building and exporting houses to Sweden, and every feedback from our customers serves as a testament to the quality guarantee.

Helvijs Ervalds | CEO | +371 25666622

info@modern-house.lv | www.modern-house.lv

@housemodern_2021 **@ModernHouseLV**

LEARN MORE



TWO-STORY TIMBER FRAME HOUSE

Living area - 144,00 m²
Building area - 228,00 m²

WHY CHOOSE MODERN HOUSE?



TOP QUALITY



ENERGY EFFICIENCY



MODERN DESIGN



THOUGHTFUL PLANNING



CUSTOMIZED APPROACH AVAILABLE



MODERN HOUSE OFFERS:

- ✓ **DESIGN SERVICES**
(ARCHITECTURAL, HOME, CONSTRUCTION DESIGN)
- ✓ **PRIVATE HOUSE CONSTRUCTION**
- ✓ **MODULAR HOUSE CONSTRUCTION**
- ✓ **CONSTRUCTION OF INDIVIDUAL PROJECTS**
- ✓ **3D MODELING AND VISUALIZATION**
- ✓ **BUILDING PROJECT APPROVAL WITH LOCAL AUTHORITIES**
- ✓ **STRUCTURAL DESIGN PROJECTS FOR TIMBER FRAME BUILDINGS**