




TWO-STORY TIMBER FRAME TWIN HOUSE BJÖRNRIKE

The project is designed with a practical, thoughtful layout and a modern visual solution. The concept of the house is designed to achieve an energy efficiency rating of A, which will have a positive impact on low monthly utility costs.

The construction of the building will be based on extensive experience in building and exporting houses to Sweden, and every feedback from our customers serves as a testament to the quality guarantee.

Helvijs Ervalds | CEO | +371 25666622

info@modern-house.lv | www.modern-house.lv

@housemodern_2021  **@ModernHouseLV**

LEARN MORE

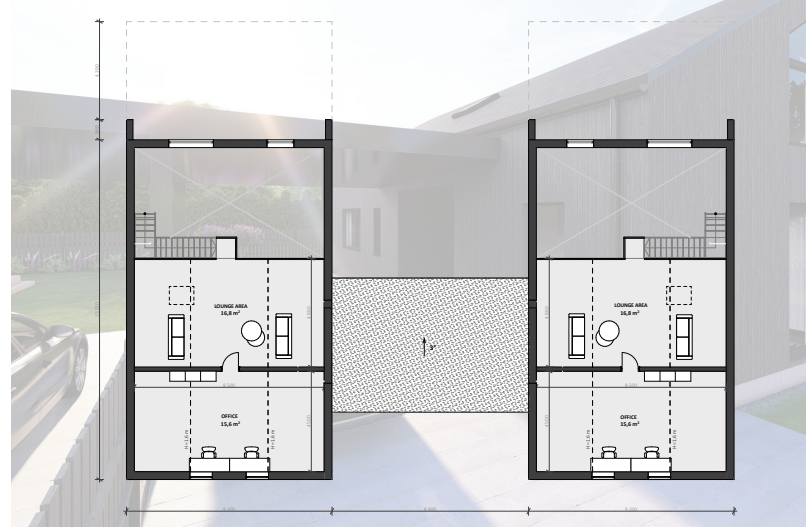


TWO-STORY TIMBER FRAME TWIN HOUSE

Living area - 155,43 m²
 Building area - 215,03 m²

WHY CHOOSE MODERN HOUSE?

-  — TOP QUALITY
-  — ENERGY EFFICIENCY
-  — MODERN DESIGN
-  — THOUGHTFUL PLANNING
-  — CUSTOMIZED APPROACH AVAILABLE





TWO-STORY TIMBER FRAME TWIN HOUSE HABO

The project is designed with a practical, thoughtful layout and a modern visual solution. The concept of the house is designed to achieve an energy efficiency rating of A, which will have a positive impact on low monthly utility costs.

The construction of the building will be based on extensive experience in building and exporting houses to Sweden, and every feedback from our customers serves as a testament to the quality guarantee.

Helvijs Ervalds | CEO | +371 25666622

info@modern-house.lv | www.modern-house.lv

@housemodern_2021 **@ModernHouseLV**

LEARN MORE



TWO-STORY TIMBER FRAME TWIN HOUSE

Living area - 150,30 m²
 Building area - 174,60 m²

WHY CHOOSE MODERN HOUSE?



TOP QUALITY



ENERGY EFFICIENCY



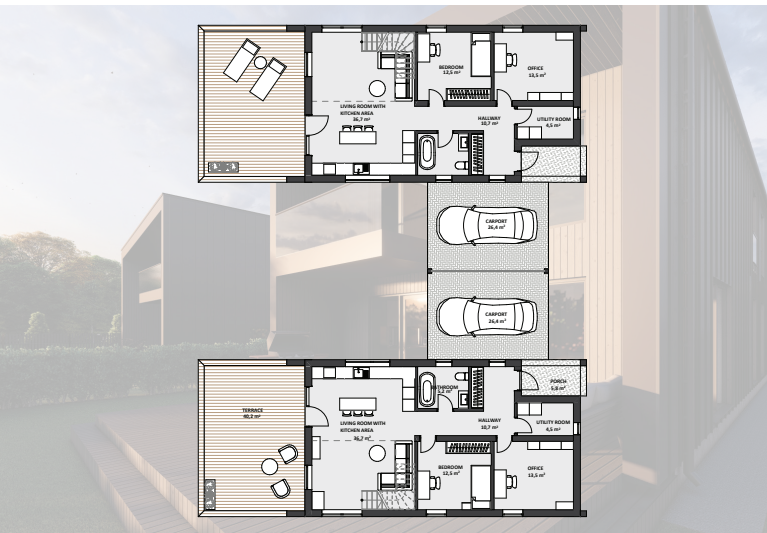
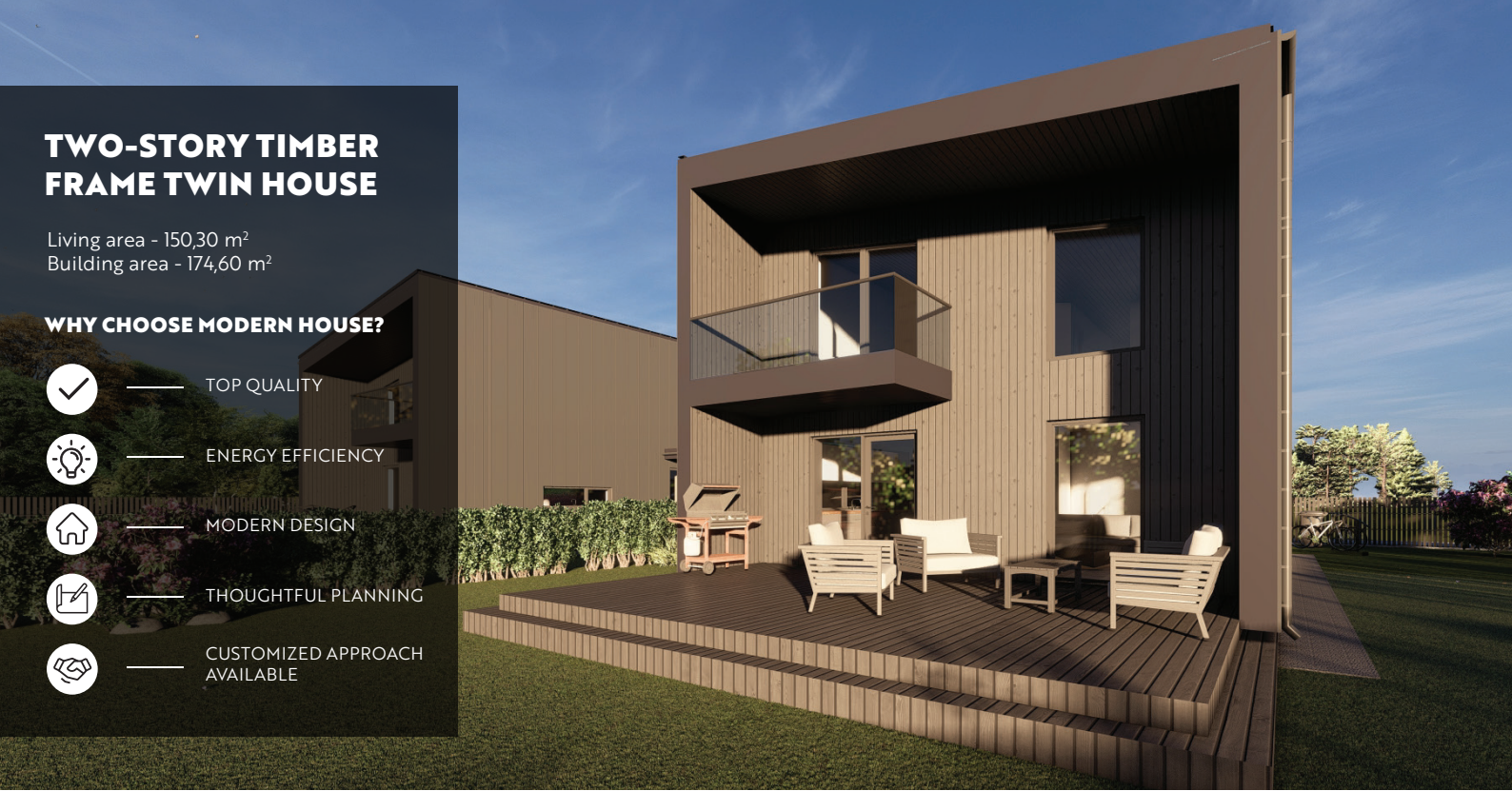
MODERN DESIGN



THOUGHTFUL PLANNING



CUSTOMIZED APPROACH AVAILABLE






TWO-STORY TIMBER FRAME TWIN HOUSE VÄSTERÅS

The project is designed with a practical, thoughtful layout and a modern visual solution. The concept of the house is designed to achieve an energy efficiency rating of A, which will have a positive impact on low monthly utility costs.

The construction of the building will be based on extensive experience in building and exporting houses to Sweden, and every feedback from our customers serves as a testament to the quality guarantee.

Helvijs Ervalds | CEO | +371 25666622

info@modern-house.lv | www.modern-house.lv

@housemodern_2021  **@ModernHouseLV**

LEARN MORE



TWO-STORY TIMBER FRAME TWIN HOUSE

Living area - 144,00 m²
 Building area - 211,50 m²

WHY CHOOSE MODERN HOUSE?

-  — TOP QUALITY
-  — ENERGY EFFICIENCY
-  — MODERN DESIGN
-  — THOUGHTFUL PLANNING
-  — CUSTOMIZED APPROACH AVAILABLE

